



Yamaha YZF R1 (2007)

Slip-On & Slip On SP Series Exhaust System

Akrapovic Slip-On & Slip-On SP Series Exhaust System + Y part

for the Yamaha YZF R1 (2007)

Akrapovic SLIP-ON represents an initial move in the direction of tuning and is intended for drivers, which do not desire fundamental changes in the area of the exhaust system. We offer two options of the SLIP-ON system for the Yamaha R1. Both are facilitated by the use of the stock catalyst as the system does not interfere with the catalyst position. In terms of performance measurements, the two types do not differ much. Their advantages can be illustrated in comparison with a serial exhaust system, since the increase of power and torque based on smaller modifications on the exhaust system relatively large. With the use of the catalyst the Slip-On and Slip-On SP series are available also in a street legal version. We also offer an upgrade of both Slip-On systems with a Y link pipe, which offers even more power and torque through the entire range of RPM. Because this Y link pipe replaces an original part of the exhaust, which contains the catalytic converter, the combination of the Slip-On system with the Y link pipe is not street legal.

PERFORMANCE

Measurements of the Akrapovic SLIP-ON system + Y link pipe on the YAMAHA YZF R1:

Power & Torque: measurements for both options of the exhaust were prepared. There is a minimal difference between the two options. Both exhaust options obtain a somewhat better result in the lower and particularly in the middle range of rotation. Despite the initial level of tuning, the system can substantially upgrade the serial release of power from the engine. At 12500 rpm, we measured 168,7 HP at the back wheel (both options). The systems do not differ much in terms of torque either. The upgrade of a serial torque is nicely evident particularly between 3200 rpm and 6500 rpm, in which range the motor gains the most.

CONFIGURATION

We offer two options of the Akrapovic SLIP-ON exhaust system for Yamaha R1: the standard Slip-On and the SP Series Slip-On. In both cases the system is composed of two mufflers, the difference being only the used materials and the design. Slip-On has mufflers (outer sleeve) made from titanium or carbon, the SP series only from titanium. In both cases, the mufflers are attached beneath the seat of the motorcycle by carbon clamps. Link pipes are made from titanium (SP series from stainless steel), cylindrical and welded to the mufflers. The joining of the link pipes with the stock header assembly was executed with a sleeve joint, the strength of the joint is provided by a metal clamp. The system does not retain the stock catalytic converter of exhaust gases since it is replaced by the Y link pipe. The following systems are available in this configuration: Slip-On open, Slip-On Street Legal, Slip-On SP series open, Slip-On SP series homologated.

| | PERFORMANCE | | |
|--|---------------|---------------|----------------------|
| | stock | AKRAPOVIC | max. increased power |
| max. rear wheel power HP / rpm (measured on SuperFlow Cycle Dyn) | 164.3 / 12600 | 168.7 / 12500 | 7.8 / 7600 |

| | CONFIGURATION | | |
|------------|---------------|-----------------|-----------------------------|
| | header tubes | collector | link pipe |
| material | - | STAINLESS STEEL | TITANIUM STAINLESS STEEL |
| tube shape | - | CONICAL | CYLINDRICAL |

| | | | |
|-------------------------------------|-----------------------------|--|---|
| interference crossover tubes | - | lambda sensor | YES |
| header tube inner sleeves | - | header tube flanges | - |
| header tubes - collector connection | SLEEVE JOINT + METAL CLAMP | collector / header tube - link pipe connection | SLEEVE JOINT + METAL CLAMP |
| link pipe - muffler connection | WELDED | muffler inlet cap / outlet cap | TITANIUM / CARBON-FIBER |
| muffler metal interior | TITANIUM STAINLESS STEEL | muffler outer sleeve | TITANIUM or CARBON-FIBER / TITANIUM (SP series) |
| muffler clamp | CARBON-FIBER | muffler bracket | - |
| muffler insert | EU | NOISE DAMPER | heat shield |
| | US | - | catalytic converter |

| | ADDITIONAL DATA | | | | |
|---|--|-----------|---|--------------|------------------------|
| | stock | AKRAPOVIC | | difference | |
| | | SO+y | SP series SO+y | stock - SO+Y | stock - SP series SO+y |
| weight comparison (kg) | 8.1 | 4.45 | 5.01 | 3.65 | 1.09 |
| noise measurements (dB / rpm) | stock | | AKRAPOVIC | | |
| | 97 / 4500 | | 100.9 / 4500 (homolog. Version 97/4500) | | |
| possibility of periodic service without removing A.E.S. | oil | | oil filter | | |
| | YES | | YES | | |
| legal for street use | YES (homologated version) NO (open version) | | | | |

Technical specifications of Akrapovic exhaust systems and related products subject to change without notice.

Product code: 106825 (S-Y10SO8-DTC), 106824 (S-Y10SO8-DTT)
106827 (S-Y10SO8-HDTC), 106826 (S-Y10SO8-HDTT) homologated
106943 (SS-Y10SO8-DC), 106942 (SS-Y10SO8-DT)
106945 (SS-Y10SO8-HDC), 106944 (SS-Y10SO8-HDT) homologated

Akrapovic Slip-On & Slip-On SP Series Exhaust System

for the Yamaha YZF R1 (2007)

Akrapovic SLIP-ON represents an initial move in the direction of tuning and is intended for drivers, which do not desire fundamental changes in the area of the exhaust system. We offer two options of the SLIP-ON system for the Yamaha R1: the standard Slip-On and Slip-On SP Series. Both are facilitated by the use of the stock catalyst as the system does not interfere with the catalytic converter set up. In terms of performance measurements, the two types do not differ much. Their advantages can be illustrated in comparison with a serial exhaust system, since the increase of power and torque based on smaller modifications on the exhaust system relatively large. With the use of the catalytic converter the Slip-On and Slip-On SP series are available also in a street legal version.

PERFORMANCE

Measurements of the Akrapovic SLIP-ON system on the YAMAHA YZF R1:

Power & Torque: measurements for both options of the exhaust were prepared. There is a minimal difference between the two options. Both exhaust options obtain a somewhat better result in the lower and particularly in the middle range of rpm. Despite the initial level of tuning, the system can substantially upgrade the serial release of power from the generator. At 12500 rpm, we measured 167 HP at the back wheel (both options). The systems do not differ much in terms of torque either. the upgrade of a serial torque is nicely evident particularly between 3200 rpm and 5000 rpm, in which range the motor gains the most.

CONFIGURATION

We offer two options of the Akrapovic SLIP-ON exhaust system for Yamaha R1: the standard Slip-On and the SP Series Slip-On. In both cases the system is composed of two mufflers, the difference being only the used materials and the design. Slip-On has mufflers (outer sleeve) made from titanium or carbon, the SP series only from titanium. In both cases, the mufflers are attached beneath the seat of the motorcycle by carbon clamps. Link pipes are made from titanium (SP series from stainless steel), cylindrical and welded to the mufflers. The joining of the link pipes with the stock header assembly was executed with a sleeve joint, the strength of the joint is provided by a metal clamp. The system retains the stock catalytic converter of exhaust gases. The following systems are available in this configuration: Slip-On open, Slip-On Street Legal, Slip-On SP series open, Slip-On SP series homologated.

| | PERFORMANCE | | |
|---|---------------|-------------|----------------------|
| | stock | AKRAPOVIC | max. increased power |
| max. rear wheel power HP / rpm (measured on SuperFlow Cyle Dyn) | 164.3 / 12600 | 167 / 12500 | 6.6 / 7600 |

| | CONFIGURATION | | |
|------------|---------------|-----------|-----------------------------|
| | header tubes | collector | link pipe |
| material | - | - | TITANIUM STAINLESS STEEL |
| tube shape | - | - | CYLINDRICAL |

| | | | | |
|-------------------------------------|-----------------------------|--|---|---|
| interference crossover tubes | - | lambda sensor | NO | |
| header tube inner sleeves | - | header tube flanges | - | |
| header tubes - collector connection | - | collector / header tube - link pipe connection | SLEEVE JOINT + METAL CLAMP | |
| link pipe - muffler connection | WELDED | muffler inlet cap / outlet cap | TITANIUM / CARBON-FIBER | |
| muffler metal interior | TITANIUM STAINLESS STEEL | muffler outer sleeve | TITANIUM or CARBON-FIBER / TITANIUM (SP series) | |
| muffler clamp | CARBON-FIBER | muffler bracket | - | |
| muffler insert | EU | NOISE DAMPER | heat shield | - |
| | US | - | catalytic converter | - |

| | ADDITIONAL DATA | | | | |
|---|--|-----------|---|------------|----------------------|
| | stock | AKRAPOVIC | | difference | |
| weight comparison (kg) | 4.52 | SO | SP series | stock - SO | stock - SP series SO |
| | | 3.13 | 3.69 | 1.39 | 0.83 |
| noise measurements (dB / rpm) | stock | | AKRAPOVIC | | |
| | 97 / 4500 | | 100.9 / 4500 (homolog. Version 97/4500) | | |
| possibility of periodic service without removing A.E.S. | oil | | oil filter | | |
| | YES | | YES | | |
| legal for street use | YES (homologated version) NO (open version) | | | | |

Technical specifications of Akrapovic exhaust systems and related products subject to change without notice.

Product code: 106825 (S-Y10SO8-DTC), 106824 (S-Y10SO8-DTT)
106827 (S-Y10SO8-HDTC), 106826 (S-Y10SO8-HDTT) homologated
106943 (SS-Y10SO8-DC), 106942 (SS-Y10SO8-DT)
106945 (SS-Y10SO8-HDC), 106944 (SS-Y10SO8-HDT) homologated

Akrapovic Slip-On Exhaust System for the Yamaha YZF R1 (2007)



OPTIONAL LINK PIPE

CARBON-FIBER
MUFFLER CLAMPS



Akrapovic Exhaust System Technology copyright 2007, all rights reserved

Road
Program

Product code: 106825 (S-Y10S08-DTC), 106824 (S-Y10S08-DTT)
106827 (S-Y10S08-HDTC), 106826 (S-Y10S08-HDTT) homologated

Akrapovic Slip-On Exhaust System for the Yamaha YZF R1 (2007)

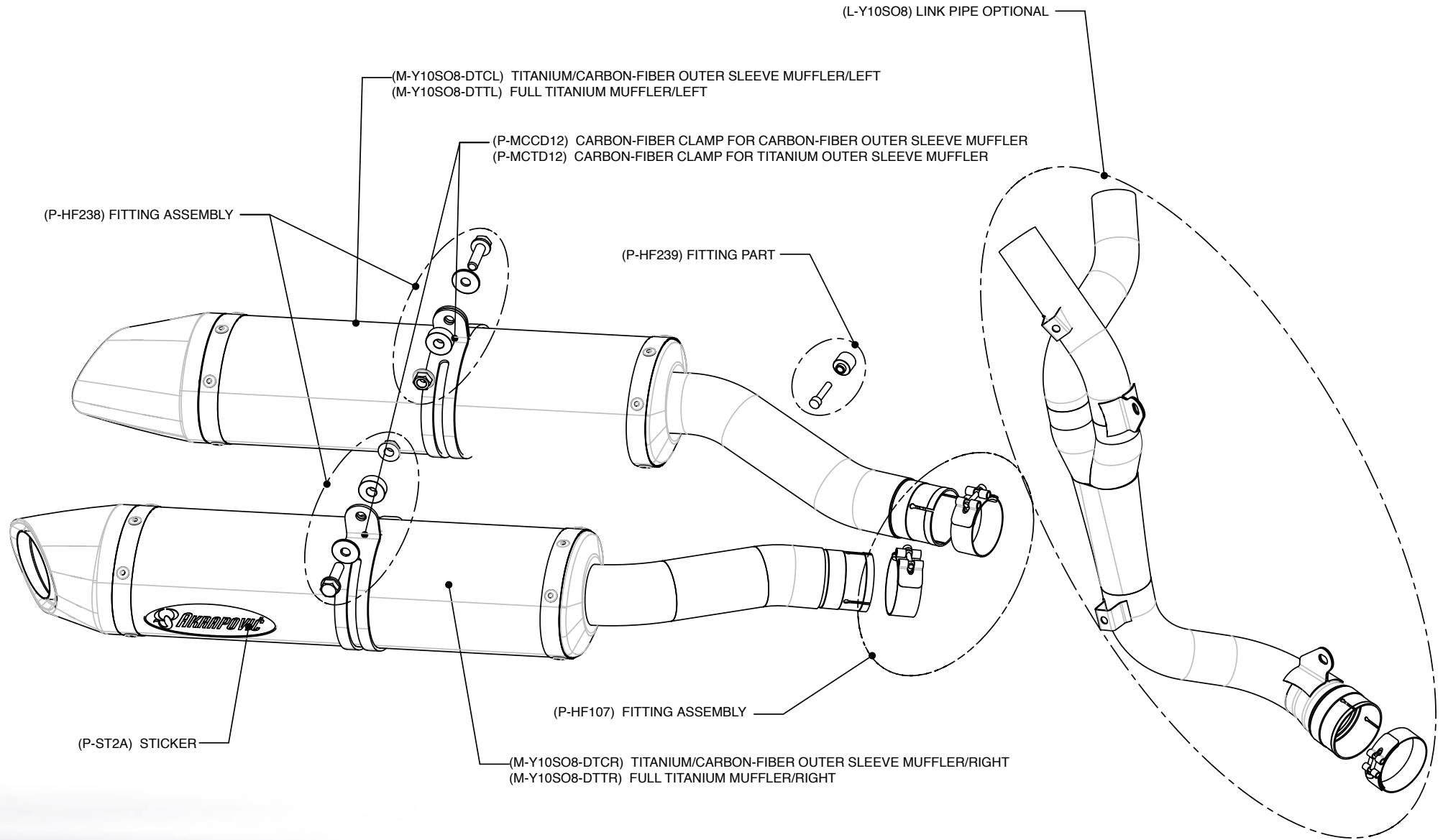


Akrapovic Exhaust System Technology copyright 2007, all rights reserved

Road Program

Product code: 106825 (S-Y10SO8-DTC), 106824 (S-Y10SO8-DTT)
106827 (S-Y10SO8-HDTC), 106826 (S-Y10SO8-HDTT) homologated

Akrapovic Slip-On Exhaust System for the Yamaha YZF R1 (2007)



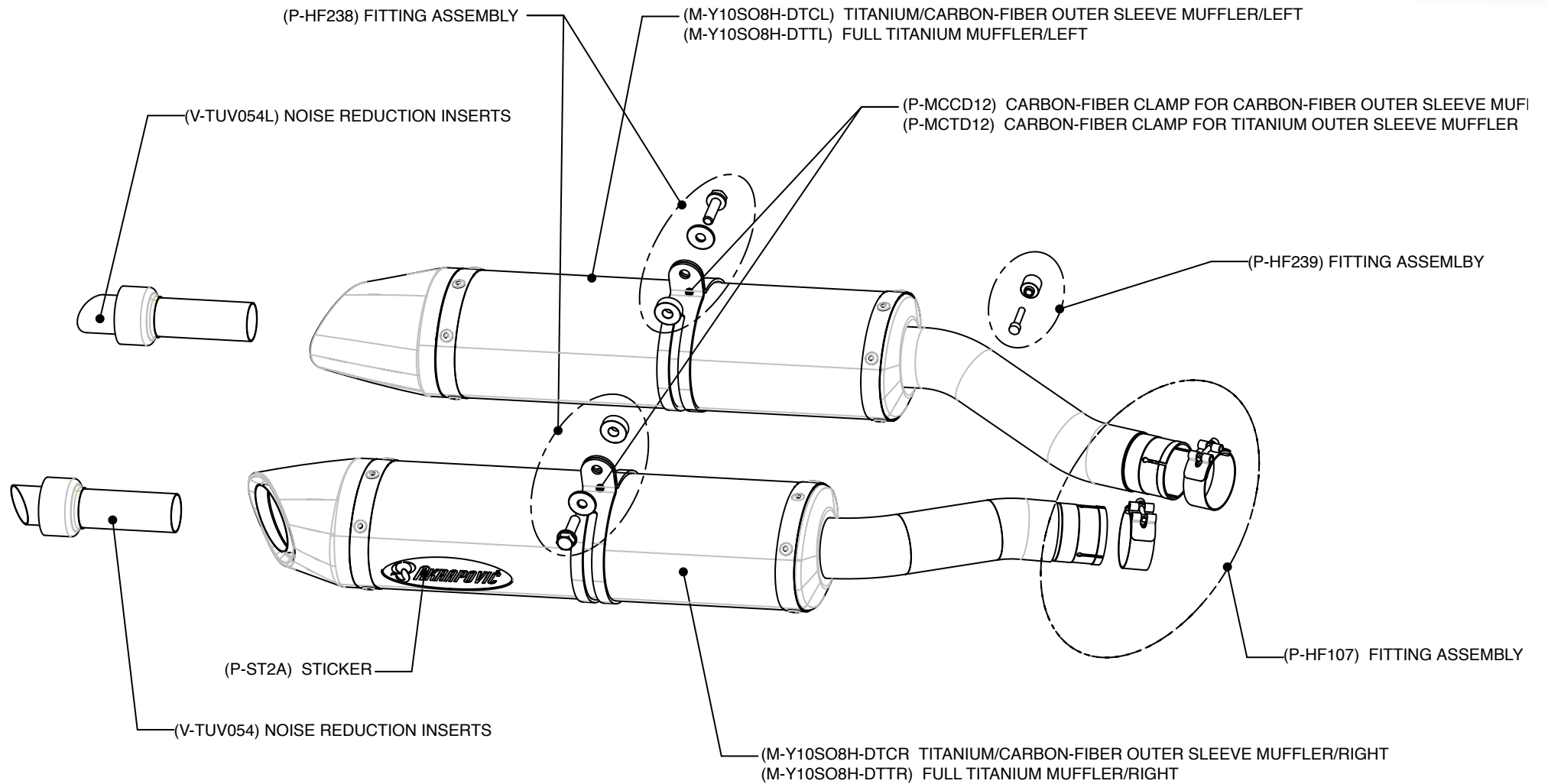
Akrapovic Exhaust System Technology copyright 2007, all rights reserved

Road Program

Product code: 106825 (S-Y10SO8-DTC), 106824 (S-Y10SO8-DTT)



Akrapovic Slip-On Exhaust System for the Yamaha YZF R1 (2007)



Akrapovic Exhaust System Technology copyright 2007, all rights reserved

Road Program

Product code: 106827 (S-Y10SO8-HDTC), 106826 (S-Y10SO8-HDTT) homologated

Akrapovic Slip-On SP Series Exhaust System for the Yamaha YZF R1 (2007)



Road Program

OPTIONAL LINK PIPE

CARBON-FIBER MUFFLER CLAMPS

Product code: 106943 (SS-Y10SO8-DC), 106942 (SS-Y10SO8-DT)
106945 (SS-Y10SO8-HDC), 106944 (SS-Y10SO8-HDT) homologated

Akrapovic Slip-On SP Series Exhaust System for the Yamaha YZF R1 (2007)

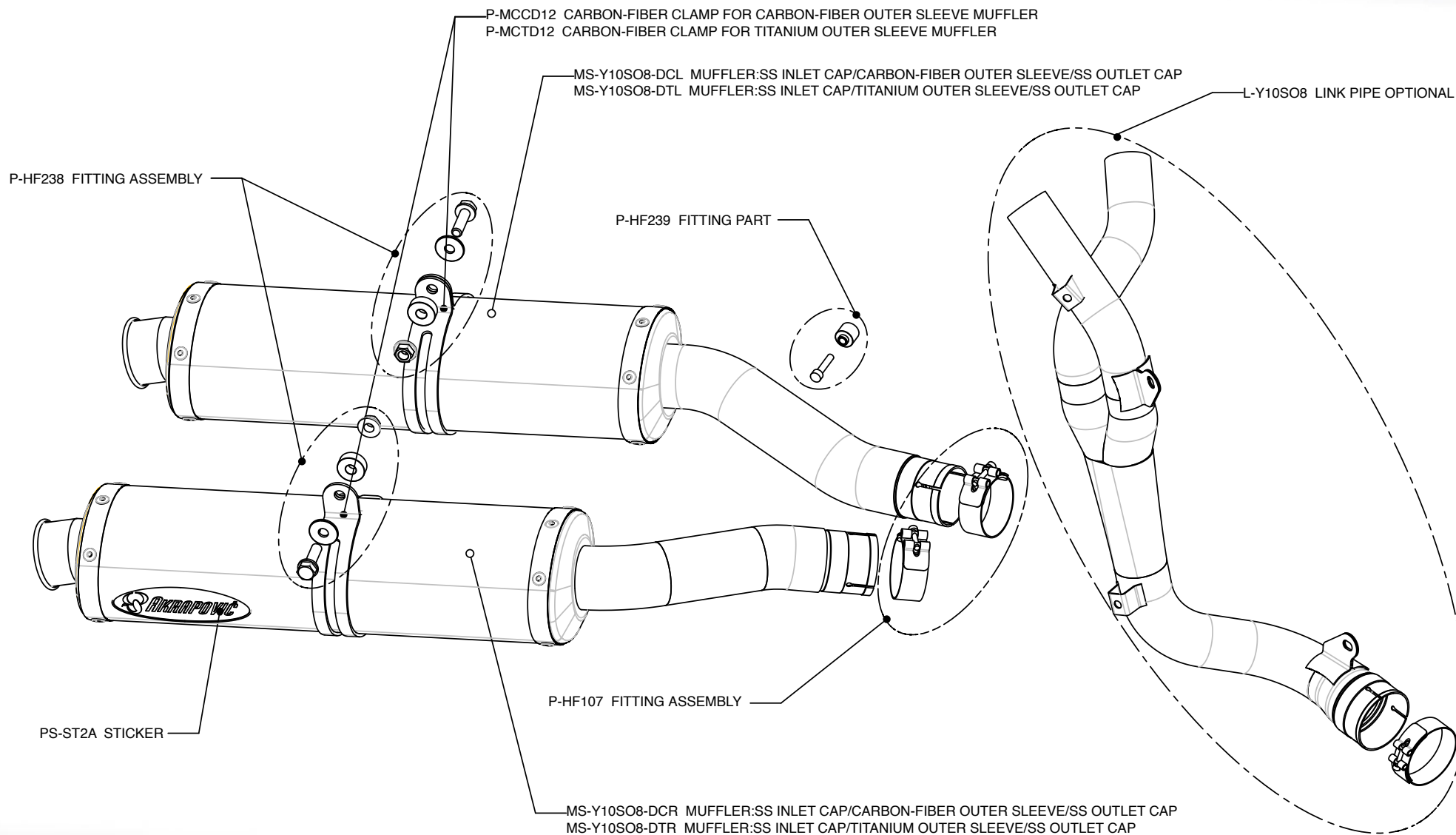


Akrapovic Exhaust System Technology copyright 2007, all rights reserved

Road Program

Product code: 106943 (SS-Y10SO8-DC), 106942 (SS-Y10SO8-DT)
106945 (SS-Y10SO8-HDC), 106944 (SS-Y10SO8-HDT) homologated

Akrapovic On SP Series Exhaust System for the Yamaha YZF R1 (2007)

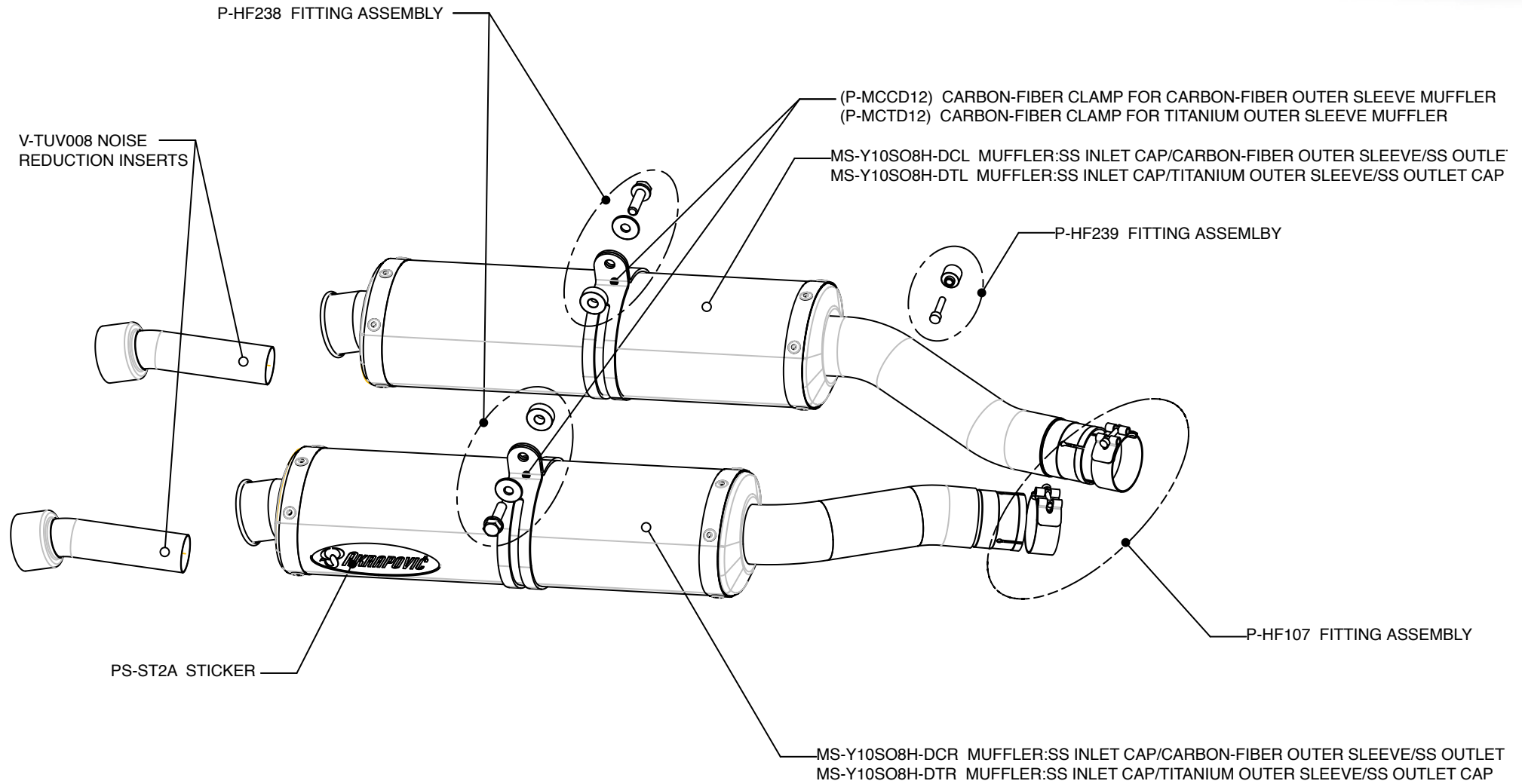


Akrapovic Exhaust System Technology copyright 2007, all rights reserved

Road Program

Product code: 106943 (SS-Y10SO8-DC), 106942 (SS-Y10SO8-DT)

Akrapovic Slip-On SP Series Exhaust System for the Yamaha YZF R1 (2007)



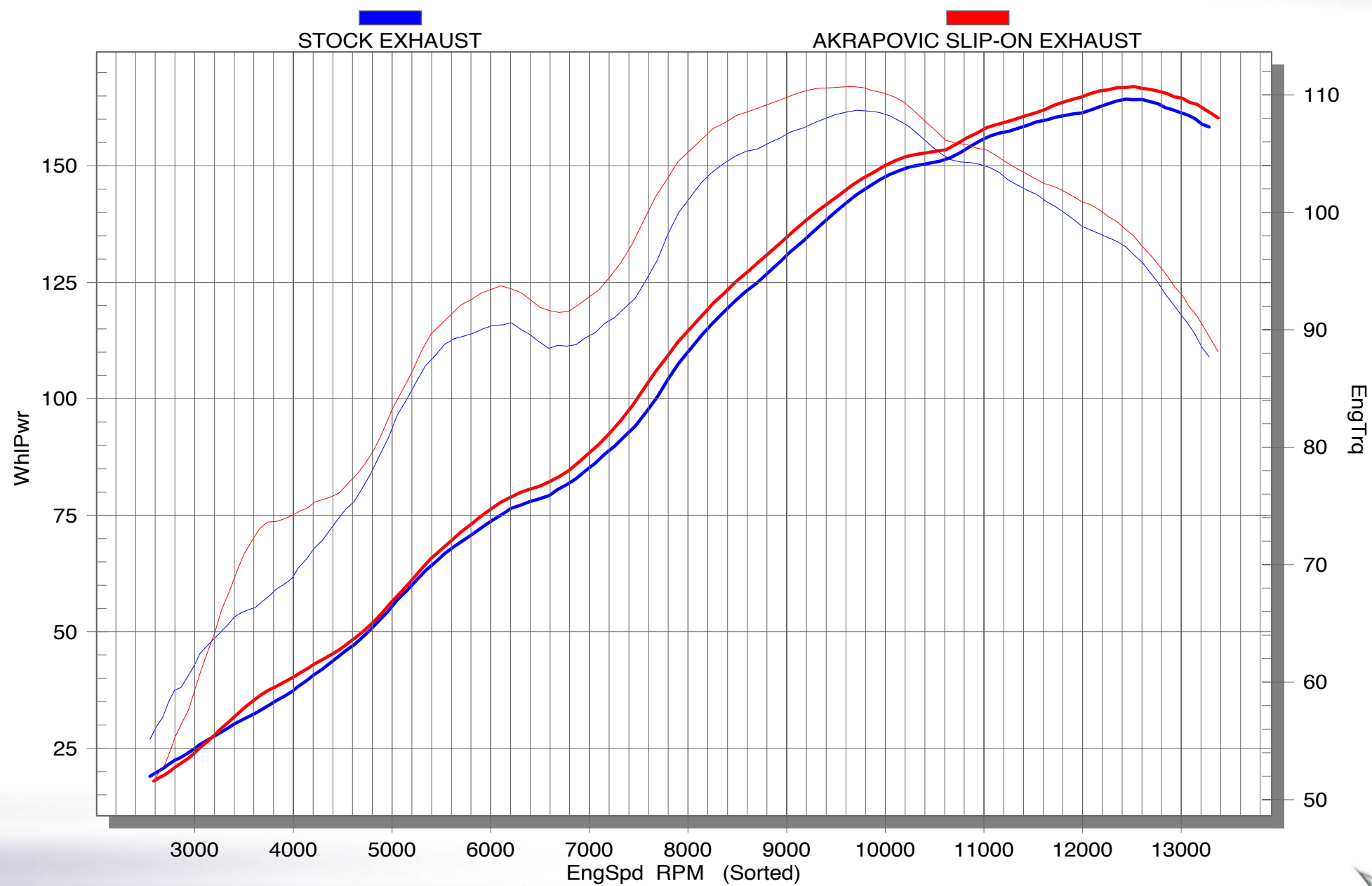
Akrapovic Exhaust System Technology copyright 2007, all rights reserved

Road Program

Product code: 106945 (SS-Y10SO8-HDC), 106944 (SS-Y10SO8-HDT) homologated



Akrapovic Slip-On & Slip-On SP Series Exhaust System for the Yamaha YZF R1 (2007)



Road Program

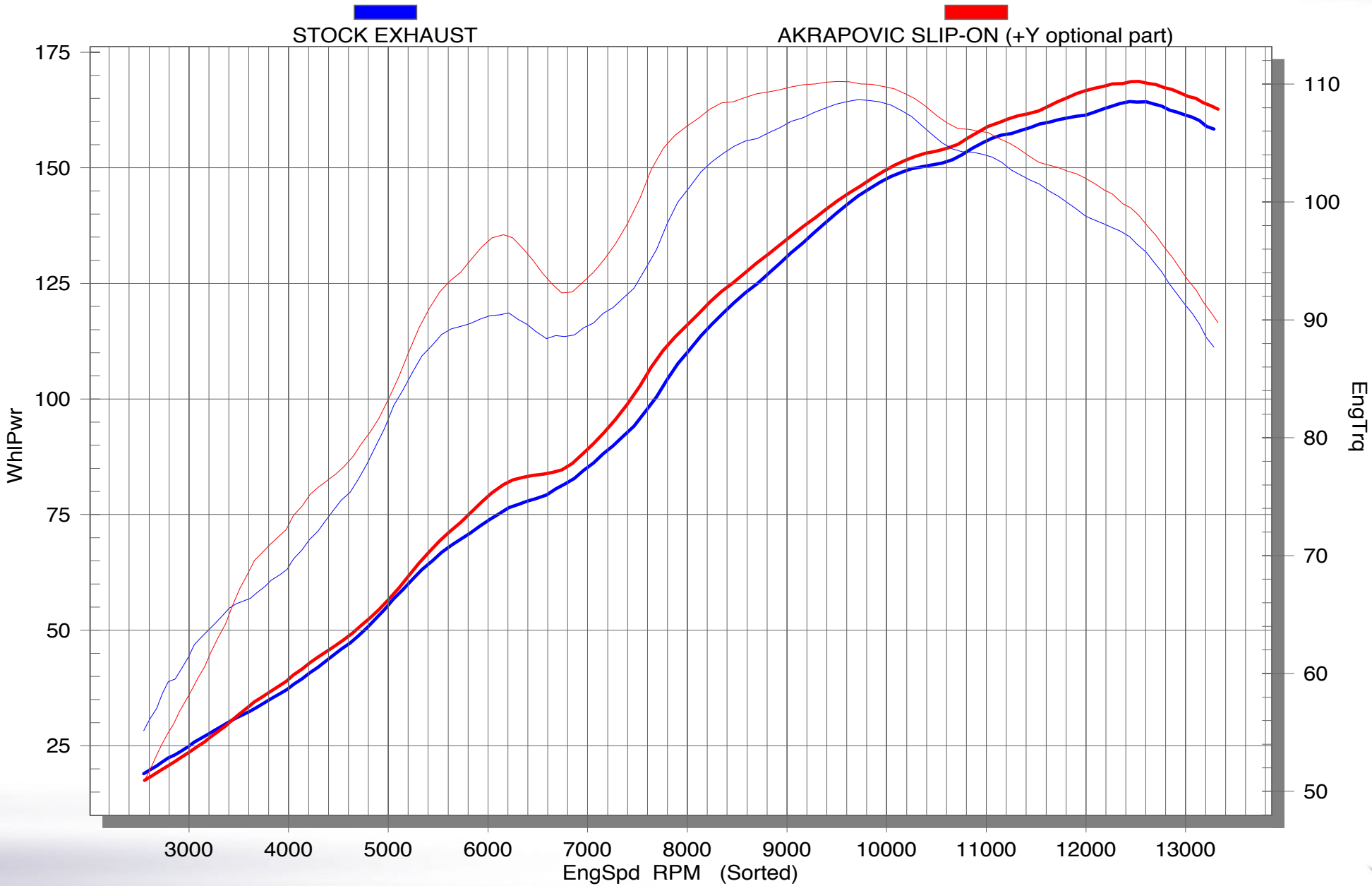
Product code: 106825 (S-Y10SO8-DTC), 106824 (S-Y10SO8-DTT)
 106827 (S-Y10SO8-HDTC), 106826 (S-Y10SO8-HDTT) homologated
 106943 (SS-Y10SO8-DC), 106942 (SS-Y10SO8-DT)
 106945 (SS-Y10SO8-HDC), 106944 (SS-Y10SO8-HDT) homologated



Akrapovic Exhaust System Technology copyright 2007, all rights reserved

Akrapovic Slip-On & Slip-On SP Series Exhaust System

for the Yamaha YZF R1 (2007)



Road Program

Product code: 106825 (S-Y10SO8-DTC), 106824 (S-Y10SO8-DTT)
 106827 (S-Y10SO8-HDTC), 106826 (S-Y10SO8-HDTT) homologated
 106943 (SS-Y10SO8-DC), 106942 (SS-Y10SO8-DT)
 106945 (SS-Y10SO8-HDC), 106944 (SS-Y10SO8-HDT) homologated



Akrapovic Exhaust System Technology copyright 2007, all rights reserved



Yamaha YZF R1 (2007)

Racing & Evolution Exhaust System

Akrapovic Racing & Evolution Exhaust System

for the Yamaha YZF R1 (2007)

The new R1 and the Akrapovic Racing/Evolution system is a combination, which promises extraordinary performance. The engine, with the aid of the Racing/Evolution system releases most power and torque and we believe that the experienced and racing oriented drivers will take great pleasure in taking advantage of the offered invigoration. Beside performance, the change will be also visual as the two "Akrapovics" fit the exterior line of the sharp Yamaha and add a clean racing image.

We would like to emphasise that for the above motorcycle a special set of Akrapovic carbon components is also available.

PERFORMANCE

Measurements of the Akrapovic EVOLUTION/RACING system on the YAMAHA YZF R1:

Power & Torque: the fitting of the Akrapovic Racing or Evolution system greatly influences the capabilities of the engine. Both power and torque gain in terms of value over the entire rpm area, this increment is most felt from middle rpm onwards. Evolution/Racing system also fills the smaller decrease of torque of the serial exhaust between 6200 and 7400 rpm. Besides this, the torque is substantially higher in a lower rpm area and from middle to high rpm area. On the back wheel we measured an incredible 170 hp at 12500 rpm, while the largest difference of 10.4 HP between the serial and Akrapovic exhaust manifests itself at 6770 rpm.

CONFIGURATION

Akrapovic RACING and EVOLUTION for Yamaha R1 has a specific configuration 4-2-1-2, which denotes: 4x header tubes are joined in to a dual collector, from this point on the system continues as a single Y part, from where two mufflers under the seat of the motorcycle. The RACING system has conical header tubes, made from stainless steel, both link pipes are cylindrical, made from titanium, and welded to the muffler. Other connections are in the form of sleeve joints, which is secured with a silicon-shielded spring. The muffler can be supplied in two types of the outer sleeve: titanium and carbon fibres. EVOLUTION differs from RACING only by the material of its pipes, which are all made from titanium. The mufflers for EVOLUTION are available in the same two types as for RACING. The metal interior parts of both mufflers are made entirely from titanium. The outlet cap is made from carbon fibres in both cases. On the Y part the two systems have a welded piece for the attachment of the lambda sensor.

| | PERFORMANCE | | |
|--|---------------|-------------|----------------------|
| | stock | AKRAPOVIC | max. increased power |
| max. rear wheel power HP / rpm (measured on SuperFlow Cycle Dyn) | 164.3 / 12600 | 170 / 12500 | 10.4 / 6770 |

| | CONFIGURATION | | | |
|------------|---|---|---|---|
| | header tubes | collector | Y-connecting tube | link pipe |
| material | TITANIUM (Evolution) STAINLESS STEEL (Racing) | TITANIUM (Evolution) STAINLESS STEEL (Racing) | TITANIUM (Evolution) STAINLESS STEEL (Racing) | TITANIUM (Evolution) TITANIUM (Racing) |
| tube shape | CONICAL | CYLINDRICAL | CONICAL | CYLINDRICAL |

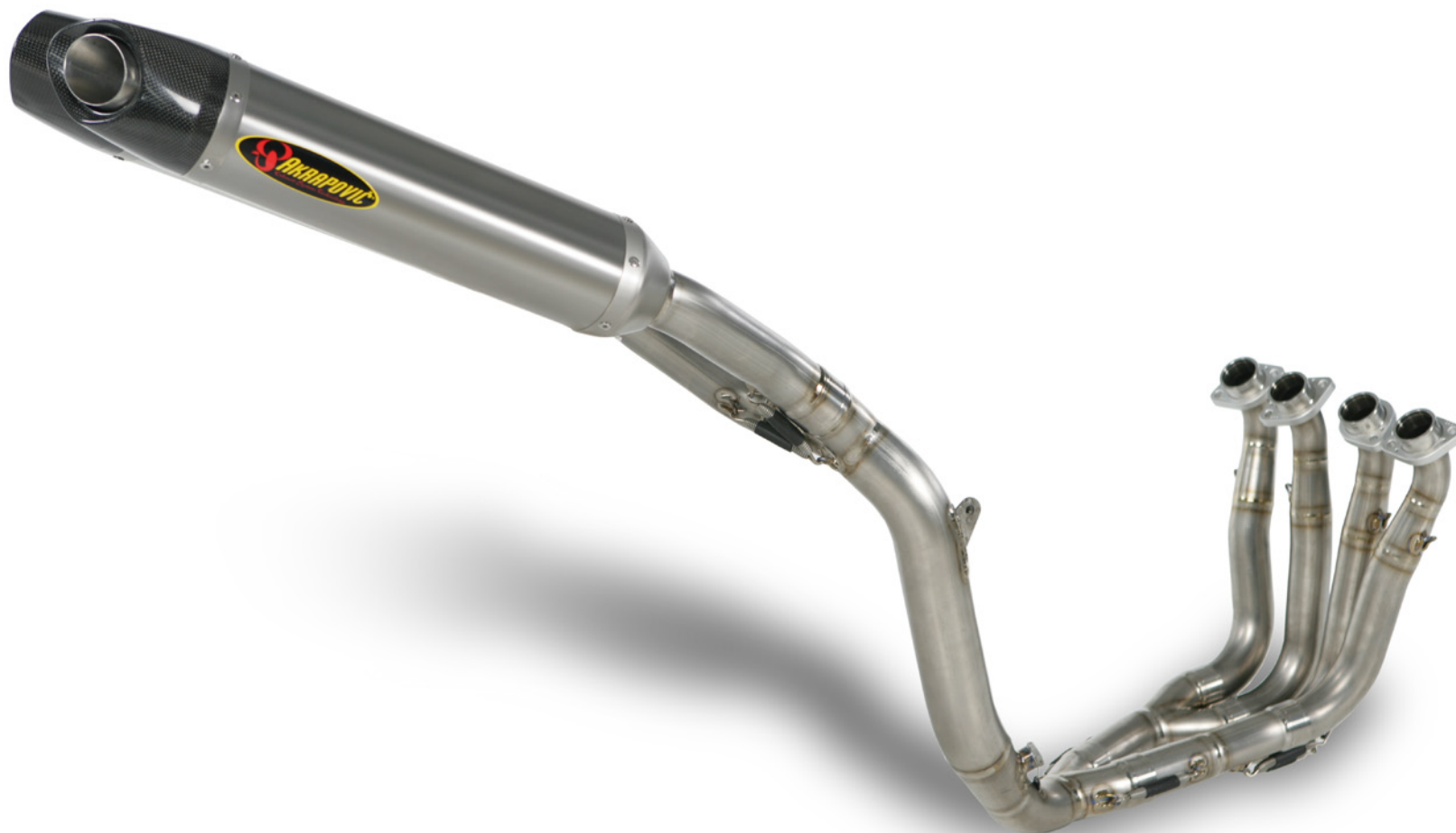
| | | | | |
|-------------------------------------|---|--|--|----|
| interference crossover tubes | NO | lambda sensor | YES | |
| header tube inner sleeves | S.S. CNC MACHINED | header tube flanges | ALU CNC MACHINED | |
| header tubes - collector connection | SLEEVE JOINT + SILICON SHIELDED SPRINGS | collector / header tube - link pipe connection | SLEEVE JOINT + SILICON SHIELDED SPRINGS | |
| link pipe - muffler connection | SLEEVE JOINT + SILICON SHIELDED SPRINGS | muffler inlet cap / outlet cap | TITANIUM - CARBON FIBER / STAINLESS STEEL - CARBON FIBER | |
| muffler metal interior | TITANIUM / STAINLESS STEEL | muffler outer sleeve | TITANIUM or CARBON-FIBER | |
| muffler clamp | CARBON-FIBER | muffler bracket | - | |
| muffler insert | EU | NOISE DAMPER | heat shield | NO |
| | US | - | catalytic converter | NO |

| | ADDITIONAL DATA | | | | |
|---|-----------------|-----------|---------------------|----------------|-------------------|
| | stock | AKRAPOVIC | | difference | |
| | | RACING | EVOLUTION | stock - RACING | stock - EVOLUTION |
| weight comparison (kg) | 10.47 | 7.27 | 5.53 | 3.20 | 4.94 |
| noise measurements (dB / rpm) | stock | | AKRAPOVIC | | |
| | 97 / 4500 | | 106.6 / 4500 (open) | | |
| possibility of periodic service without removing A.E.S. | oil | | oil filter | | |
| | YES | | YES | | |
| legal for street use | NO | | | | |

Technical specifications of Akrapovic exhaust systems and related products subject to change without notice.

Product code: 106955 (S-Y10R9-DTC), 106954 (S-Y10R9-DTT) Racing
 106965 (S-Y10R9-DTC/1), 106964 (S-Y10R9-DTT/1) Racing (noise damper)
 106953 (S-Y10RFT9T-DTC), 106952 (S-Y10RFT9T-DTT) Evolution
 106963 (S-Y10RFT9T-DTC/1), 106962 (S-Y10RFT9T-DTT/1) Evolution (noise damper)
 107066 (S-Y10EFT9T-DTT) Evolution KIT

Akrapovic Racing & Evolution Exhaust System for the Yamaha YZF R1 (2007)



Akrapovic Exhaust System Technology copyright 2007, all rights reserved

Road
Program

Product code: 106955 (S-Y10R9-DTC), 106954 (S-Y10R9-DTT) Racing
106965 (S-Y10R9-DTC/1), 106964 (S-Y10R9-DTT/1) Racing (noise damper)
106953 (S-Y10RFT9T-DTC), 106952 (S-Y10RFT9T-DTT) Evolution
106963 (S-Y10RFT9T-DTC/1), 106962 (S-Y10RFT9T-DTT/1) Evolution (noise damper)
107066 (S-Y10EFT9T-DTT) Evolution KIT

Akrapovic Racing & Evolution Exhaust System for the Yamaha YZF R1 (2007)

Akrapovic Exhaust System Technology copyright 2007, all rights reserved



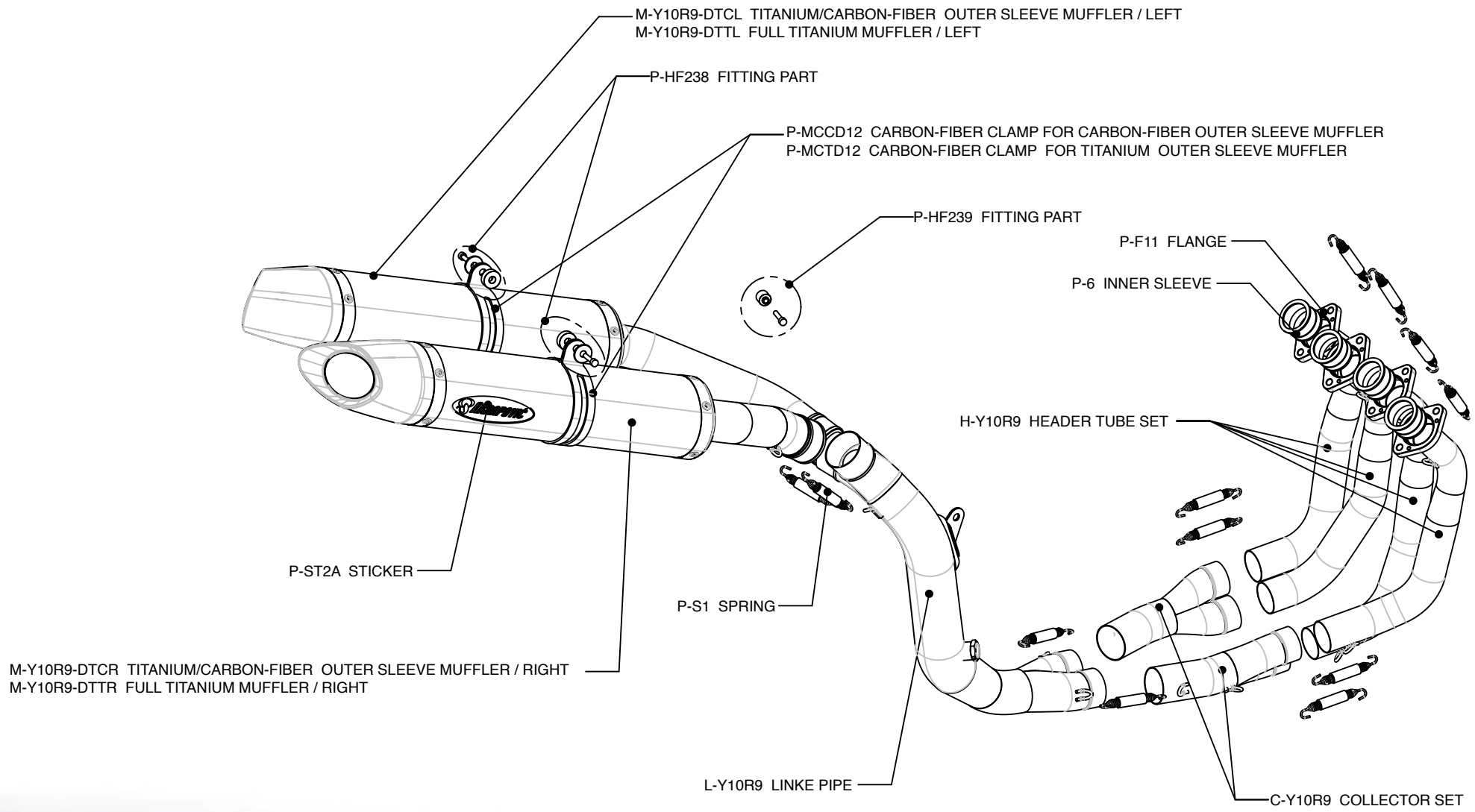
Road
Program

Product code: 106955 (S-Y10R9-DTC), 106954 (S-Y10R9-DTT) Racing
106965 (S-Y10R9-DTC/1), 106964 (S-Y10R9-DTT/1) Racing (noise damper)
106953 (S-Y10RFT9T-DTC), 106952 (S-Y10RFT9T-DTT) Evolution
106963 (S-Y10RFT9T-DTC/1), 106962 (S-Y10RFT9T-DTT/1) Evolution (noise damper)
107066 (S-Y10EFT9T-DTT) Evolution KIT

Akrapovic Racing & Evolution Exhaust System

for the Yamaha YZF R1 (2007)

Akrapovic Exhaust System Technology copyright 2007, all rights reserved



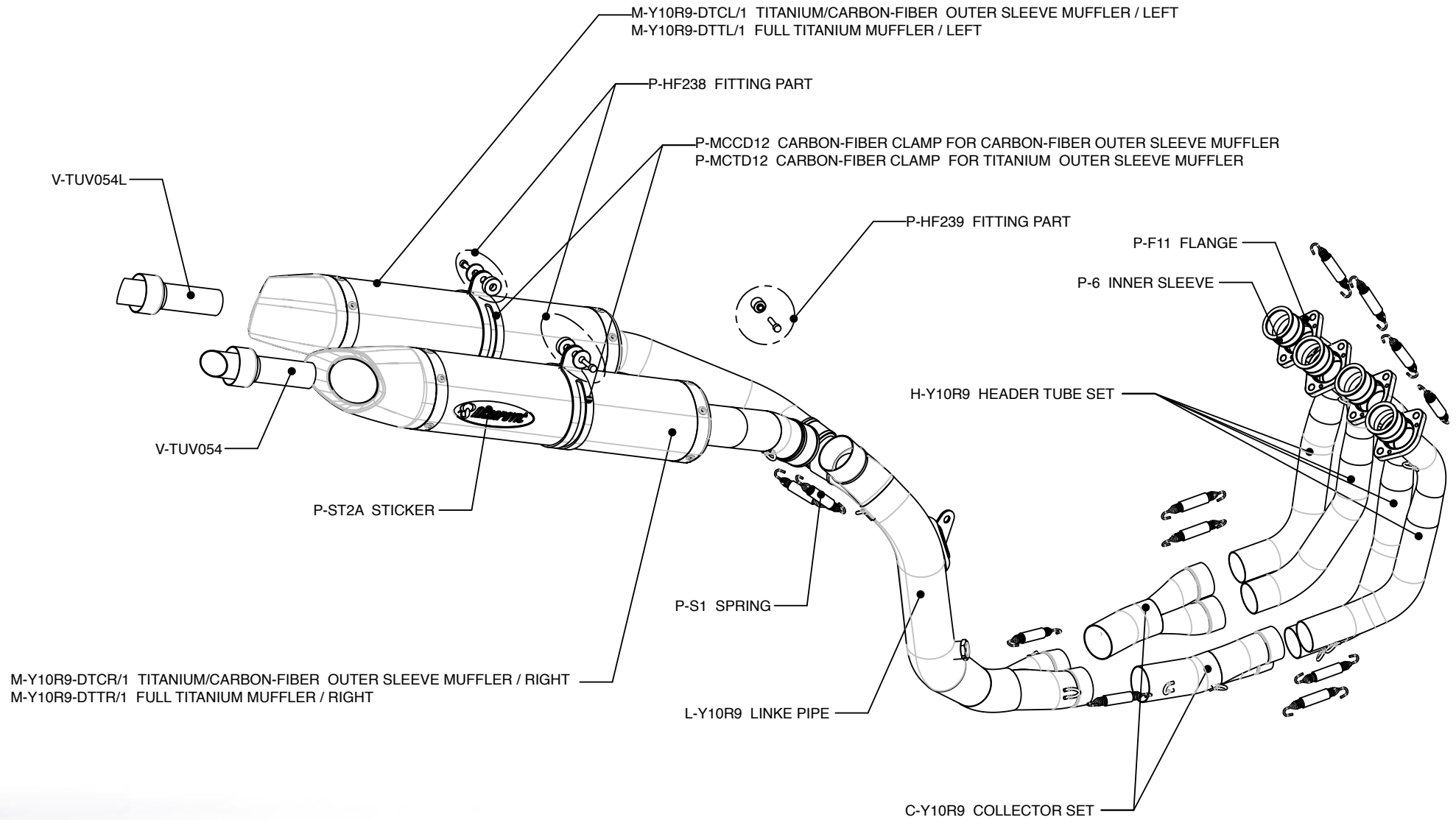
Road Program

Product code: 106955 (S-Y10R9-DTC), 106954 (S-Y10R9-DTT) Racing



Akrapovic Racing & Evolution Exhaust System

for the Yamaha YZF R1 (2007)

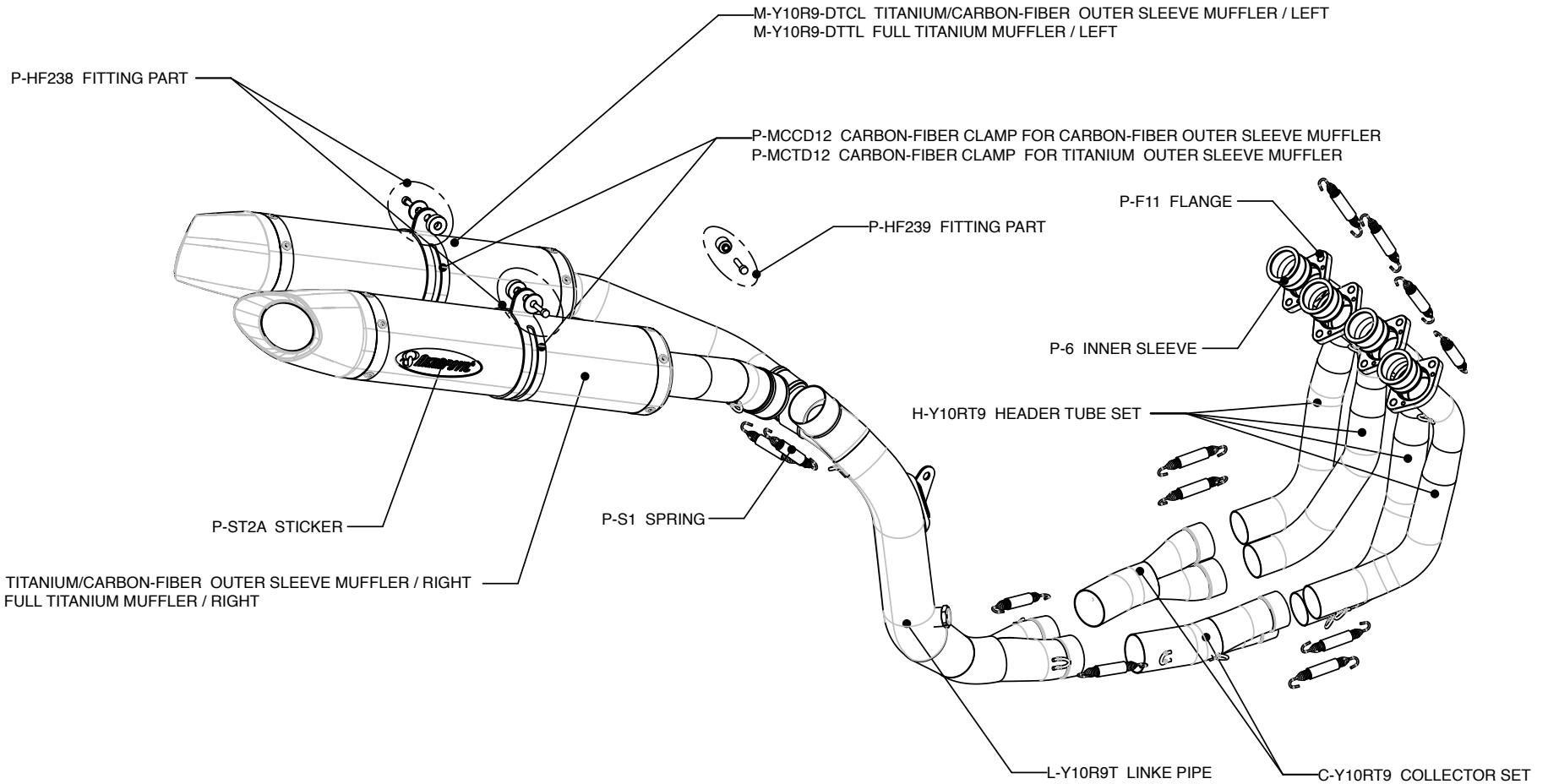


Akrapovic Exhaust System Technology copyright 2007, all rights reserved

Road Program

Product code: 106965 (S-Y10R9-DTC/1), 106964 (S-Y10R9-DTT/1) Racing (noise damper)

Akrapovic Racing & Evolution Exhaust System for the Yamaha YZF R1 (2007)



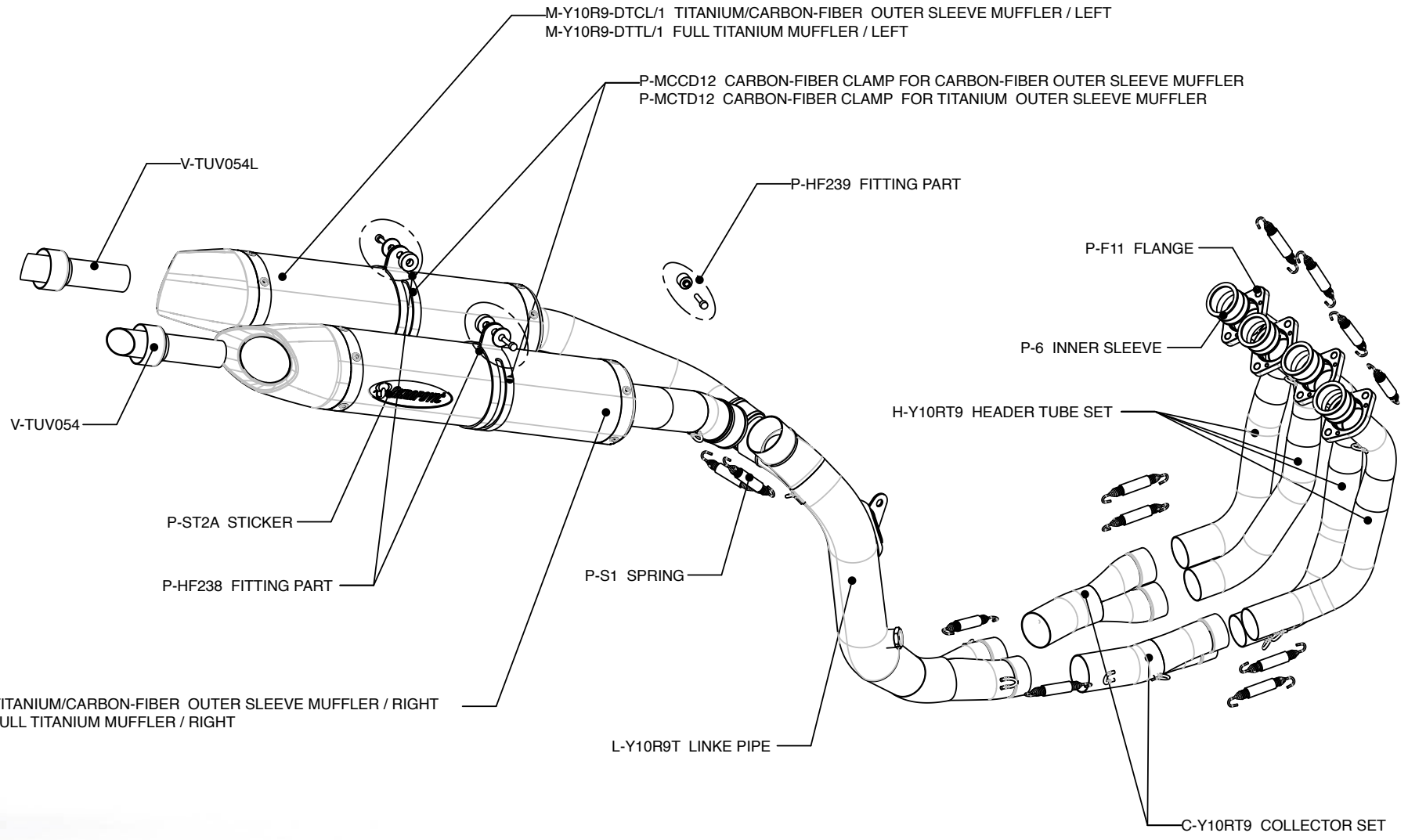
Akrapovic Exhaust System Technology copyright 2007, all rights reserved

Road Program

Product code: 106953 (S-Y10RFT9T-DTC), 106952 (S-Y10RFT9T-DTT) Evolution

Akrapovic Racing & Evolution Exhaust System

for the Yamaha YZF R1 (2007)

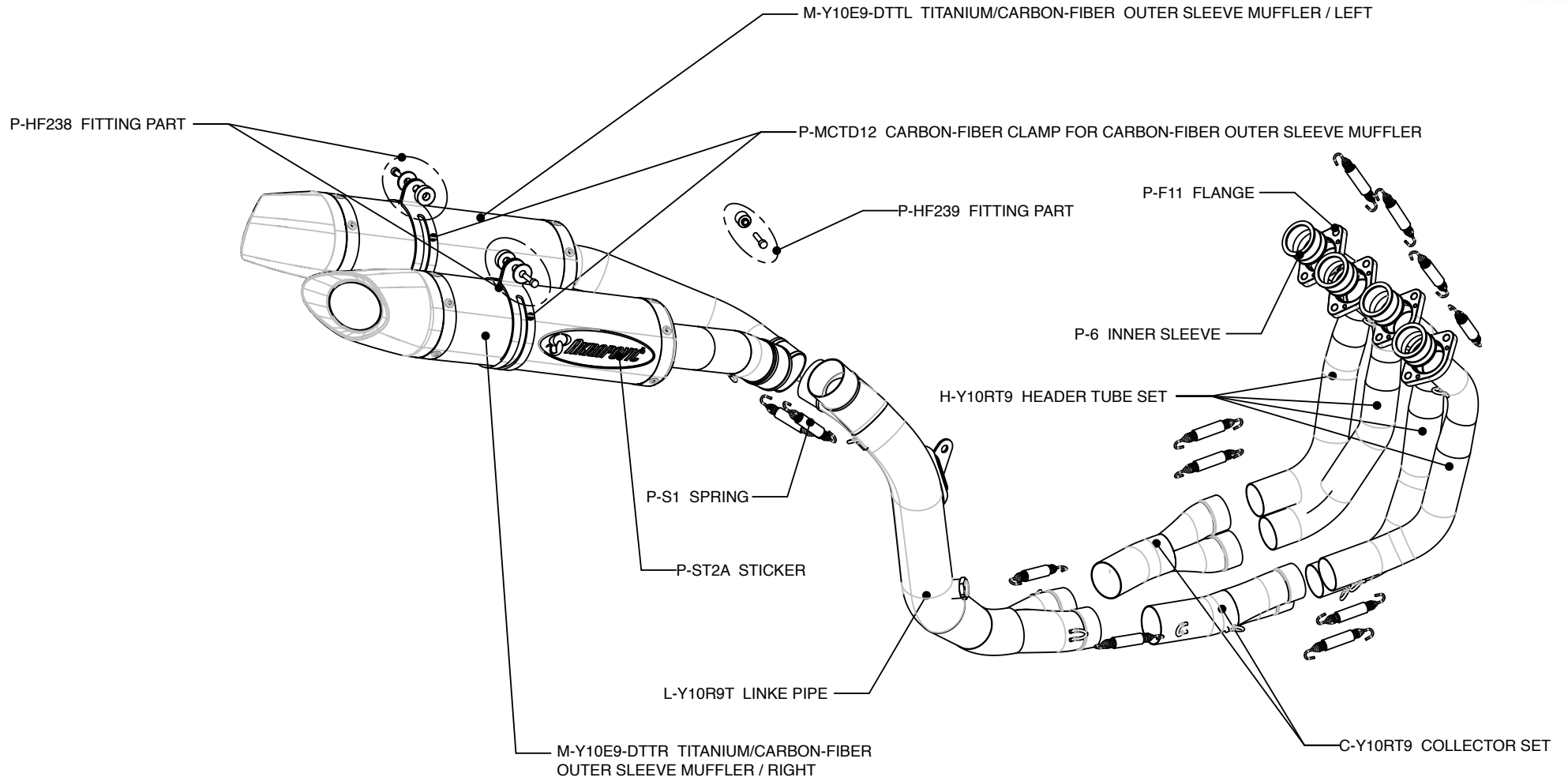


Product code: 106963 (S-Y10RFT9T-DTC/1), 106962 (S-Y10RFT9T-DTT/1) Evolution (noise damper)

Road
Program

Akrapovic Exhaust System Technology copyright 2007, all rights reserved

Akrapovic Racing & Evolution Exhaust System for the Yamaha YZF R1 (2007)



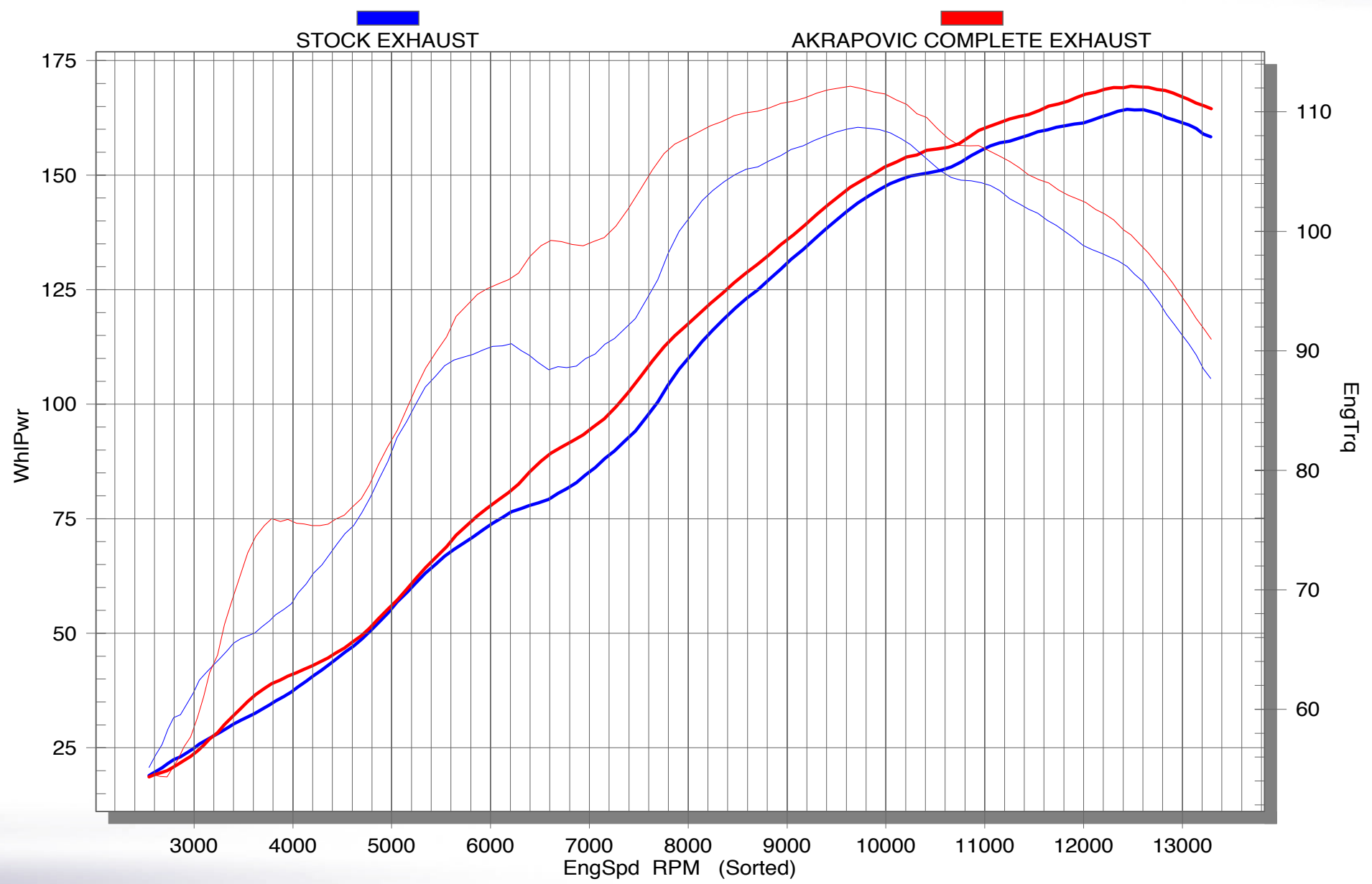
Akrapovic Exhaust System Technology copyright 2007, all rights reserved

Road
Program

Product code: 107066 (S-Y10EFT9T-DTT) Evolution KIT



Akrapovic Racing & Evolution Exhaust System for the Yamaha YZF R1 (2007)



Road Program

- Product code: 106955 (S-Y10R9-DTC), 106954 (S-Y10R9-DTT) Racing
 106965 (S-Y10R9-DTC/1), 106964 (S-Y10R9-DTT/1) Racing (noise damper)
 106953 (S-Y10RFT9T-DTC), 106952 (S-Y10RFT9T-DTT) Evolution
 106963 (S-Y10RFT9T-DTC/1), 106962 (S-Y10RFT9T-DTT/1) Evolution (noise damper)
 107066 (S-Y10EFT9T-DTT) Evolution KIT



Akrapovic Exhaust System Technology copyright 2007, all rights reserved